

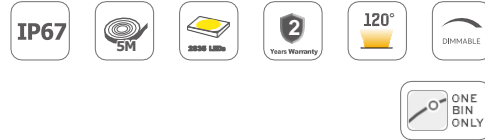


## NEON 3D Flexible 16x18mm / 14.4W / 24V

### Teknik Bilgiler

Güç	14.4W/M
Gerilim	DC24V
CRI	90
Led Sayısı	120LEDs/M
Boy	5M
Çalışma Sıcaklığı	-25°C ~ +60°C
Saklama Sıcaklığı	-30°C ~ +80°C

- Bükülebilir,Esnek. Yüksek verimli 2835 LED inside.
- UV ve sararma korumalı.
- IP67.

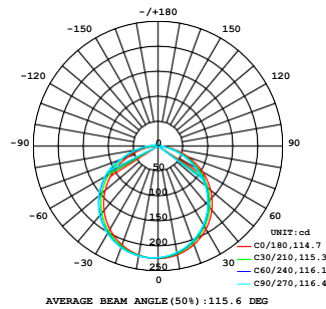


### Lumens

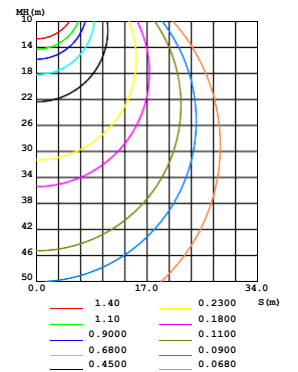
Color Temperature	
● 2700K	700lm/m
● 3000K	740lm/m
● 4000K	760lm/m
● 5000K	760lm/m
● 6000K	760lm/m

### Light Distribution

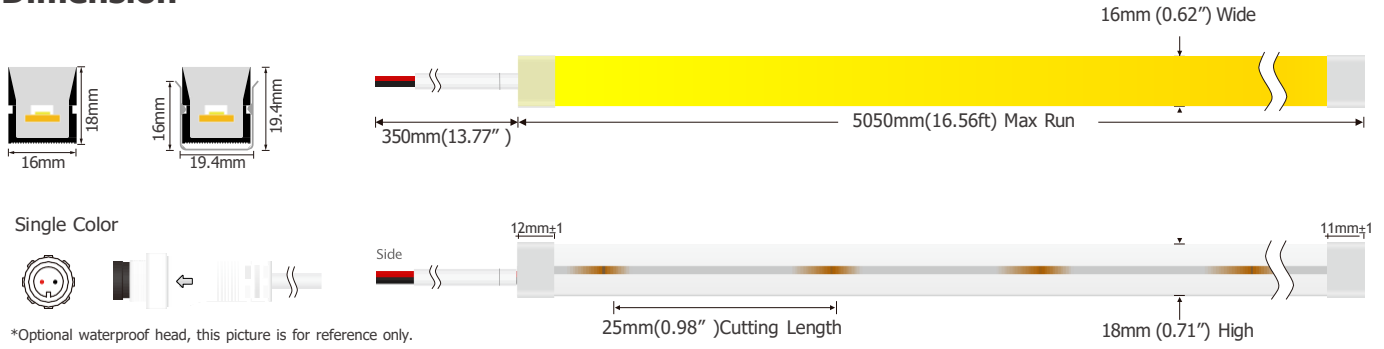
LUMINOUS INTENSITY DISTRIBUTION DIAGRAM



C0 PLANE ISOLUX DIAGRAM (UNIT:lx)

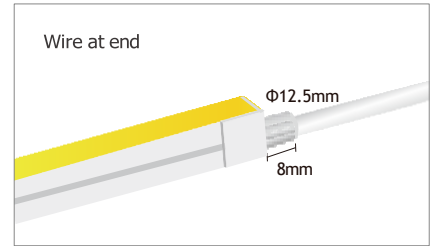
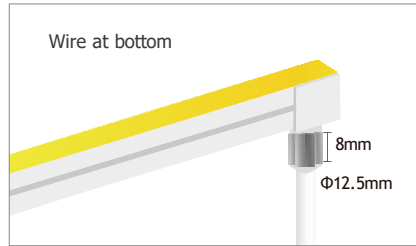
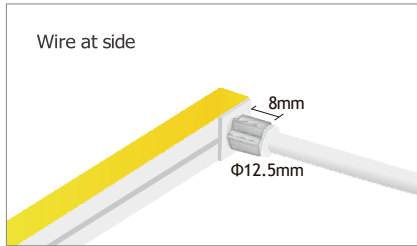


## Dimension



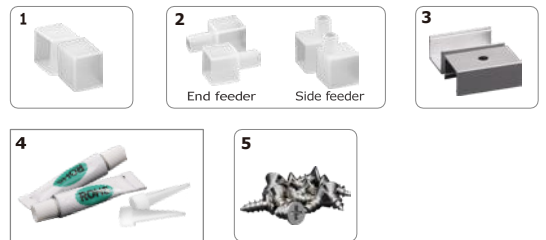
## End cap

Products	Wire at end	Wire at side	Wire at bottom
Ordinary End Cap			

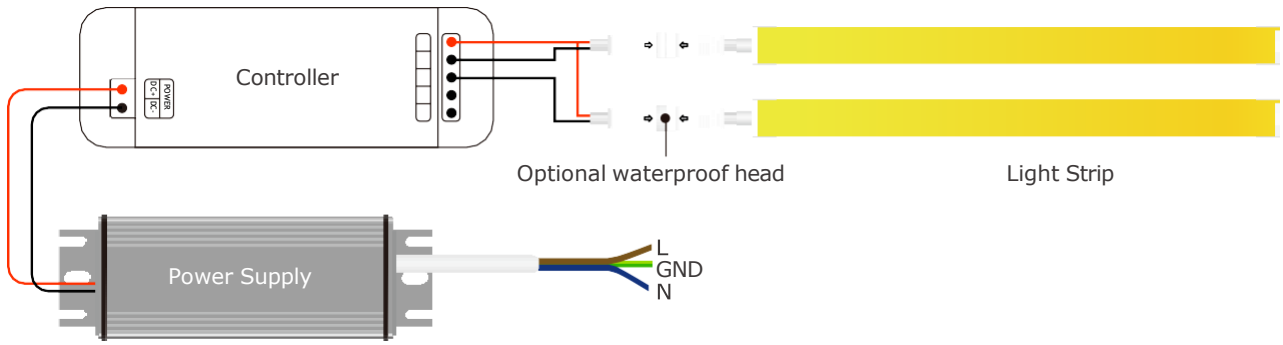


## Accessories Specification


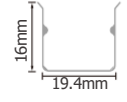


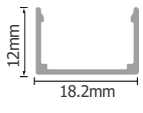


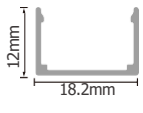

Name	Quantity	Note
1. End cap	4pc	
2. Front outlet end cap	2pc	*Optional
3. Clips	10pc	
4. Glue & Glue nozzle	2pc	
5. Screw	10pc	



## Power Connection Diagram



## Aluminum Profile List

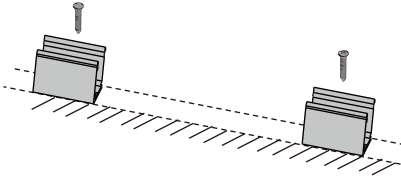
	Section diagram	install
Stainless installation chain 	 <p>16mm 19.4mm</p>	
	 <p>12mm 18.2mm</p>	
	 <p>12mm 18.2mm</p>	

Unit: mm

## Installation

### ① Clip

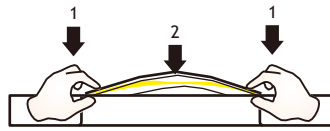
Fix the clips and aluminum profile via the screws.



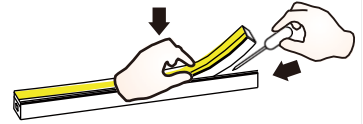
⚠ Suggestion: 2pcs clips per meter.

### ② Neon Series

Simultaneously install the neon from both ends.

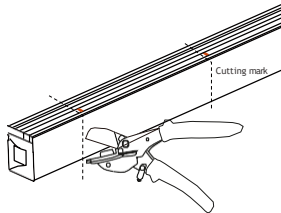


Should use tools to assist when remove the neon.



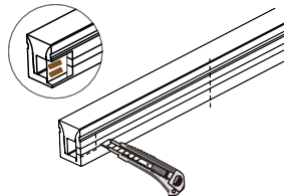
## Cutting

### ① Cut the neon to be required length



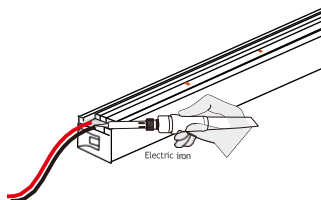
⚠ The minimum cutting unit is based on the cutting mark.

### ② Cut the side of neon, expose the soldering pad

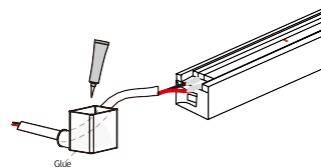


## Soldering

### ① Solder the cable onto the PCB



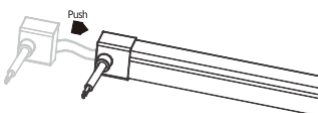
### ② Put the wire into and inject glue into the end cap



⚠ The amount of glue is about 1/3-1/2 of end cap.

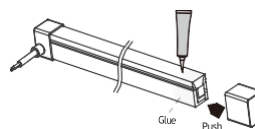
## Intall end cap

### ① Push the end cap to wrap end of neon

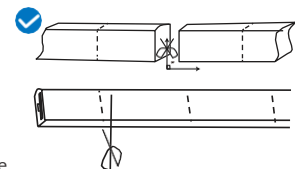


⚠ After the glue is injected, the neon needs to be laid flat for 2 hours to before other process.

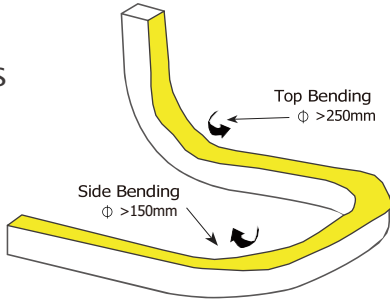
### ② Apply gel around the tail of neon and install the end cap



⚠ After the glue is injected, the neon needs to be laid flat for 2 hours to before project process. Glue will complete dry after 24hours.



3D bending series correct bending way.



## PACKING

N.W /CTN(KG)	QTY / CTN(reel)	G.W/CTN(KG)	CTN Size(mm)
1.9	5	10.25	400x400x170
